

# Newry News

Newrybar Public School  
10 Broken Head Road  
Newrybar NSW 2479



Phone: 02 6687 1343 Fax: 02 6687 2072

Email: [newrybar-p.school@det.nsw.edu.au](mailto:newrybar-p.school@det.nsw.edu.au)

Web: [www.newrybar-p.school@det.nsw.gov.au](http://www.newrybar-p.school@det.nsw.gov.au)

## TERM 4 WEEK 1-2

## 23rd October 2020

Term 4	
<b>Week 2</b>	
Oct 19-25	Aussie Bird Count
12 Oct to 13 Nov	Southern Cross Uni Prac students – Welcome to Newrybar
<b>Week 3</b>	
30 Oct	World Teachers Day- Thank you to our wonderful teachers for the fantastic job you do.

### Term 4 COVID Update

Students are NOT to attend school if they are unwell, even if they have mild symptoms. If students arrive at school unwell or become unwell during the day, exhibiting flu like symptoms, they must be sent home. Schools need to sight negative COVID test results before allowing students to return to school if they have been unwell with flu like symptoms.

### Kindergarten Orientation

Schools can now plan for kindergarten orientation programs. These activities are still very different to our usual programs and must following strict COVID safe guidelines. We ask that parents understand that we are doing our best to introduce our new families and students to the school, staff and each other.

**We will hold meet and greets 9:15- 9:45 am on Friday 13<sup>th</sup> and 20<sup>th</sup> November.** These will be in the playground for half an hour only.

Students and parents will meet the teachers and each other following strict social distancing in the shelter area near the sandpit. The staff will be able to explain the regulations and our plans moving forward if the restrictions are to remain in place for the rest of the term.

The wellbeing of our new students is a high priority for the staff so please be assured we are considering many different options for this year and the beginning of 2021 to ensure the start to school is as smooth as possible. Please contact the school if you have questions or concerns.

[newrybar-p.school@det.nsw.edu.au](mailto:newrybar-p.school@det.nsw.edu.au)

Phone 6687 1343 after 12 noon is the best time.



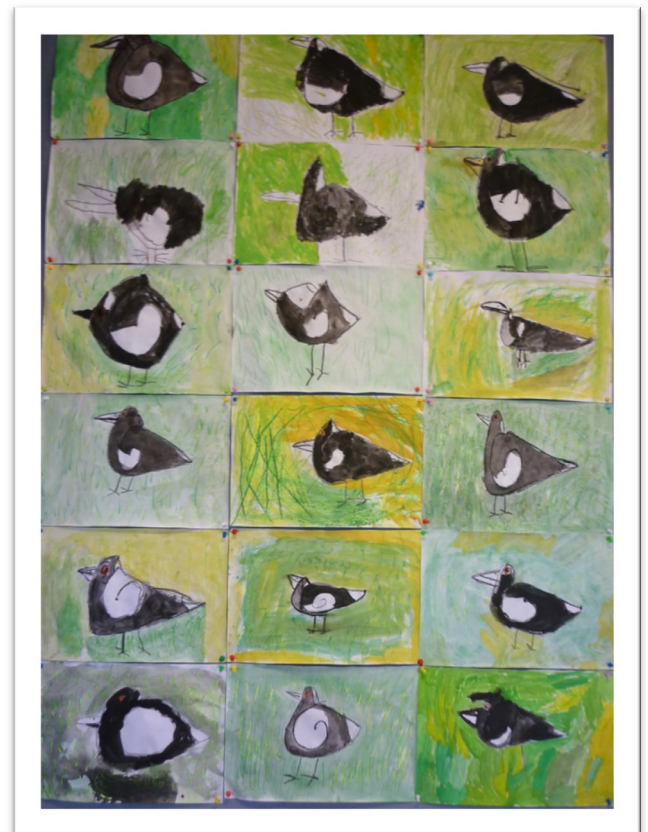


## Aussie Backyard Bird Count

This year we counted a number of magpies, rainbow lorikeets, pink galahs, butcher-birds, swallows and black cockatoos.



## Australian Magpie Artwork created by the Junior class



## Visual Arts

The Junior class have been looking closely at the birds in our school grounds and observing their colours and features. We used line drawing and water colours to create pictures of our friendly magpies.



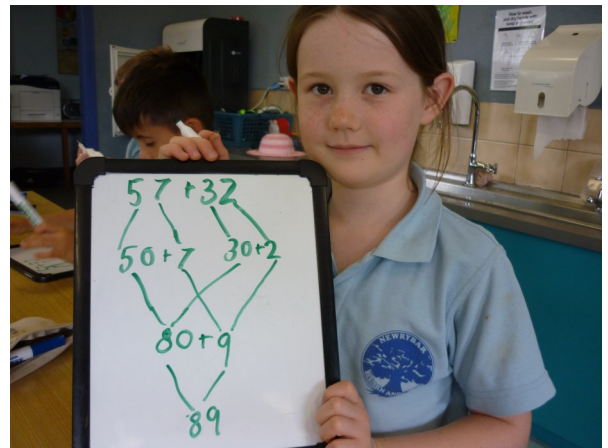
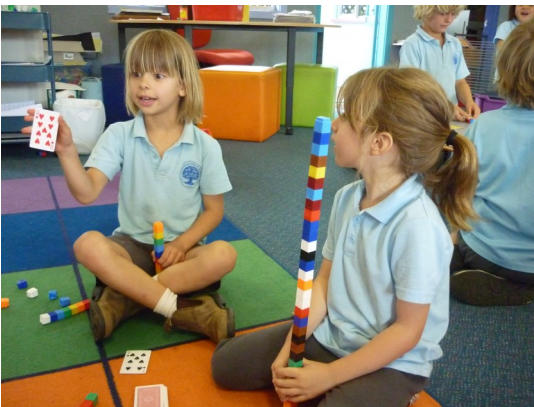
## Visual Arts

The Senior class have continued to appreciate the works of well-known artists. This week we researched artist Paul Klee who is known for cubism, expressionism and surrealism. We used line drawing, water colours and oil pastels to create our own Paul Klee inspired artwork.

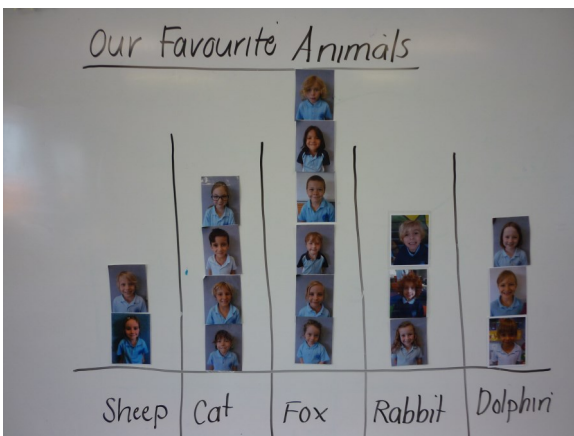


## Junior Maths

In Maths we are learning to add and subtract using a range of strategies. This week we are mastering the split-strategy. We have also used playing cards to add and subtract as we play a game that requires us to be the first to build a tower using fifty cubes.



Every day we create a pictograph using our photos. The pictograph allows us to interpret data in a quick and accurate manner.



## Sensory Education

The Junior class have continued to explore the outdoors using their senses. This week we used our sense of touch to find items in the environment that felt rough, smooth, chalky, spongy and a range of other textures. More photos can be found in the gallery on our website.

<https://newrybar-p.schools.nsw.gov.au/>



## Junior Art—Giraffes

During term 3 the Junior class worked hard over many weeks to make beautiful giraffes. We found this herd in our garden.





Education  
Standards  
Authority

## PDHPE

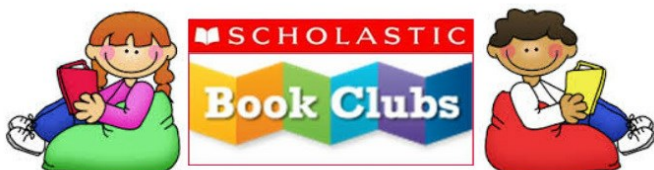
PERSONAL DEVELOPMENT,  
HEALTH AND PHYSICAL  
EDUCATION

This year, students in K-6 have been involved in the mandatory subject Personal Development, Health and Physical Education (PDHPE). This subject prepares and supports students to lead, and contribute to, healthy, safe and meaningful lives which promote respect, responsibility, enjoyment, inclusion and social justice for self and others.

Our school's PDHPE program covers a wide range of education matter, including relationships, drug use, child protection, fundamental movement skill development, safety and physical activity. Some of the content of the program deals with sensitive issues. The school recognises this by teaching about these issues within the context of a developmentally appropriate program and by providing information to you about the program.

The program this term will cover Child Protection and Road and Water Safety.

For more information on PDHPE go to <https://syllabus.nesa.nsw.edu.au/pdhpe/>. The school program aims to encourage students to make informed decisions about their lifestyle taking into account the values of the family, culture and religion to which they belong.



## School Travel for 2021



### 2021 school travel applications are now open

Applications for student travel in 2021 opened from Monday 12 October 2020.

Students who require a School Opal card or travel pass can now apply online. A new application should be submitted if a student is applying for a school travel pass for the first time or requesting an additional pass as a result of a new shared parental responsibility situation (eg joint custody)

Students who have changed school/campus, changed address, repeated a year or received and expiry notification from Transport for NSW for their school travel entitlement should re-apply or update their details/

Please see the attachment for full details.

### Focus on New Fathers Program



Please see the attachments for full details.



Lets celebrate all our teachers do, next Friday  
October 30th